



---

# Lonsdale Road N.W

---

By Akoya

Unit 19  
636 sq. ft  
Available now





Lonsdale Road is a unique London street.

Historically a stable block for the Hackney carriages, the street has morphed over time into a creative community for diverse businesses, from office studios to yoga, restoration bathrooms, a micro-brewery, vet and dentist – a village within a street.



# Connectivity



5 mins to Queens Park Station  
10 mins to Brondesbury Park Station



6 mins to Paddington Station  
14 mins to Oxford Circus





# Unit 19

## 636 sq. ft

Fully refurbished first floor office in mews building on Lonsdale Road, Queens Park To Let.

The office is located on the first floor with good natural light and high ceilings. It has been refurbished to a high standard while keeping its original features.

The office benefits from:

- Open plan layout
- Exposed brick
- Reclaimed wood flooring
- Exposed ceiling
- All electric heating
- Feature pendant & track lighting
- Sustainable bespoke bamboo kitchen
- WCs
- Situated on NW's premier mews location



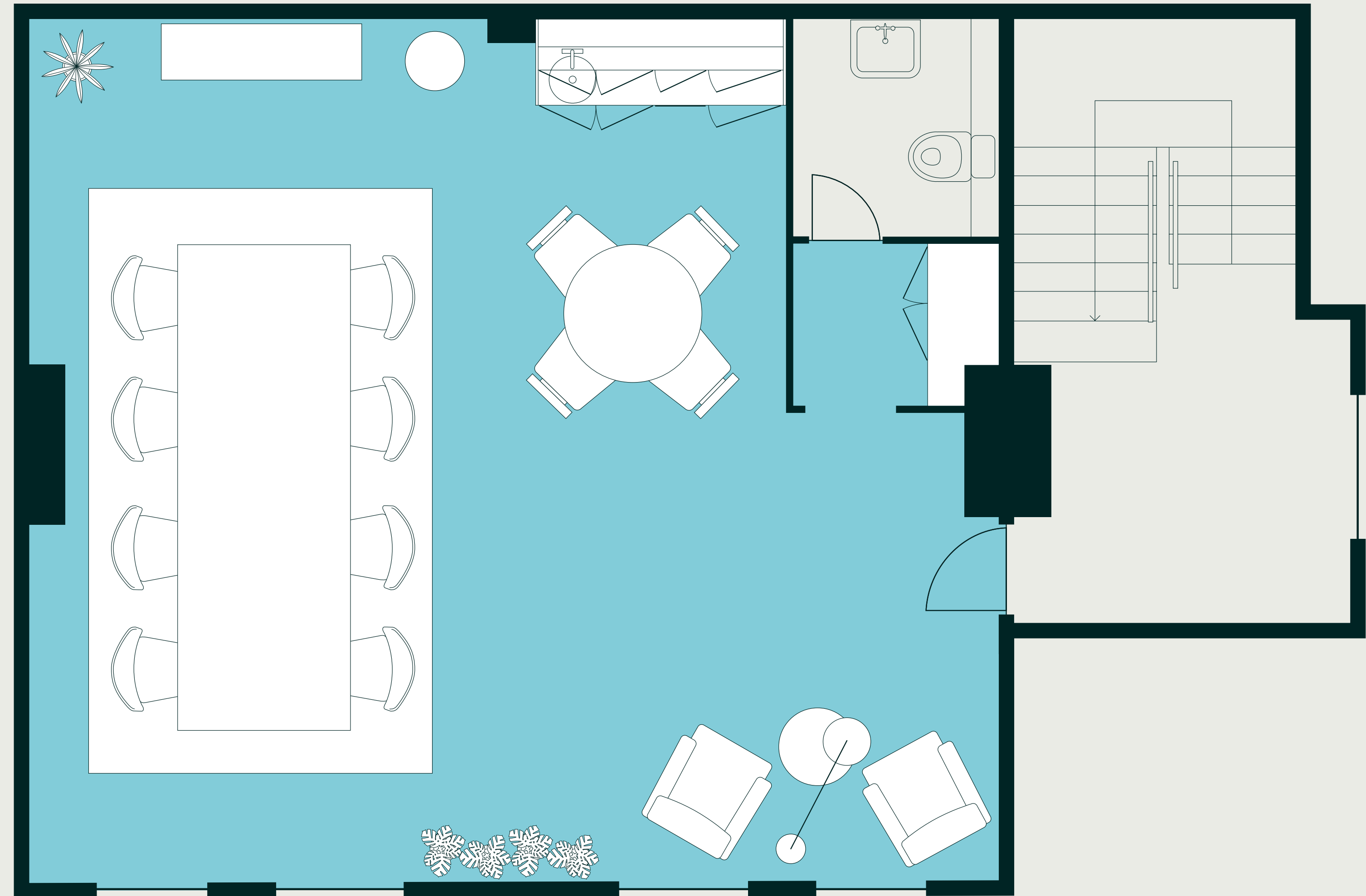






# Floor plan / Unit 19

Unit	Floor	Sq ft / Sq m
1	First	636 / 59
<b>Total</b>		<b>636 / 59</b>







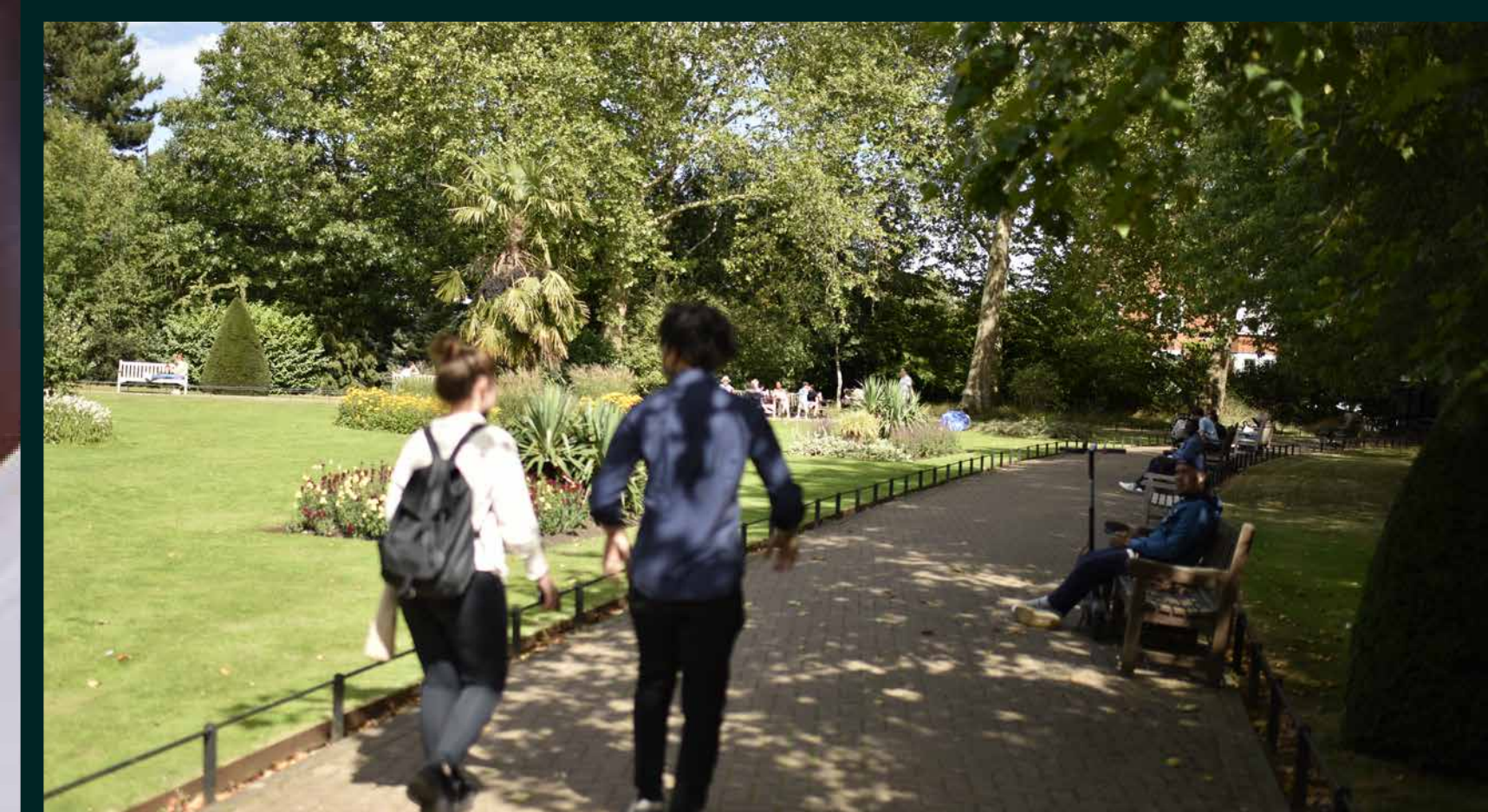
Lonsdale Road has become a hit with Queen's Park's locals who gather to enjoy the area's excellent bars and restaurants, including Milk Beach, Wolfpack Brewery, and Dark Habir Coffee to name just a few.

When the sun shines, the action moves out onto the pavements and the atmosphere is friendly and welcoming.



Queen's Park is a stone's throw away with open green spaces, all-weather tennis courts, ornamental gardens, and even a City Farm.

Yoga Loft is conveniently located on Lonsdale Road itself, with Fitness First just around the corner.





PLANET ORGANIC

Brondesbury Park (Overground. 10mins)

Mishiko Sushino

FARMER'S MARKET

SCHOOL

Medical Centre

CEMETARY

Water Monopoly

Co-working HEARTH

YOGA

Salisbury Road

Lonsdale Road N.W

Unit 19

MILK BEACH

DENTIST

WOLFPACK

VILLAGE VET

BREAD AHEAD BAKERY

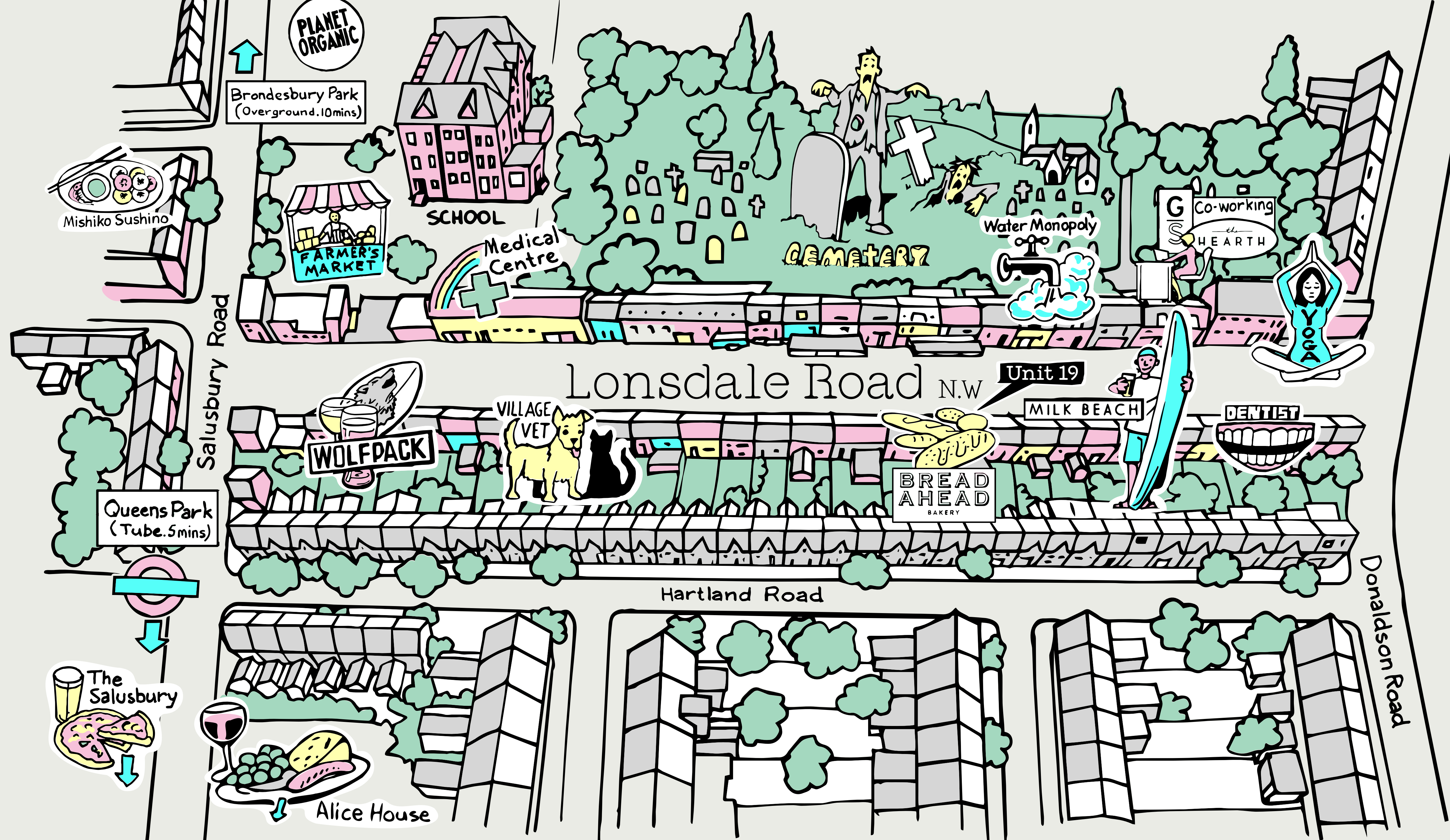
Queens Park (Tube. 5mins)

Hartland Road

Donaldson Road

The Salisbury

Alice House





# Location

Walk, run or ride to work—what's better than that?

Queen's Park is a 5 minute walk from Lonsdale Road, providing a quick service into Central London via the Bakerloo line and overground services. With Brondesbury Park only 10 minutes walk away providing overground services around the capital.





For any further information  
please contact our agent:



Peter Wilson  
peter@dutchanddutch.com  
07896 678 182

---

[www.dutchanddutch.com](http://www.dutchanddutch.com)

Misrepresentation act 1967: Dutch & Dutch, for themselves and for the lessor(s) of this property whose agents they are, give notice that: 1. These particulars do not constitute any part of, an offer or contract. 2. None of the statements contained in these particulars are to be relied on as statements or representations of fact. 3. Any intending lessee must satisfy himself by inspection or otherwise as the correctness of each of the statements contained in these particulars. 4. The lessor(s) do not make or give and neither Dutch & Dutch, nor any person in their employment has any authority make or give, any representation or warranty whatever in relation to this property. Finance Act 1989: Unless otherwise stated all prices and rents are quoted exclusive of VAT Property Misdescription Act 1991: These details are believed to be correct at the time of compilation but may be subject to subsequent amendment. Brochure and photographs. December 2023. Designed by Smart Soho

#### Terms

Flexible terms available.

EPC: TBC.

We scour the London landscape to find assets in emerging neighbourhood locations that we believe are hidden gems.

Then we invest to create sustainable workplaces and creative, entrepreneurial communities.

Textured places with heart and soul where people can work, create, collaborate and have fun.

Our name comes from a Japanese cultured pearl. It fits us perfectly because we create places that become pearls.

[www.akoyalondon.com](http://www.akoyalondon.com)

---

Lonsdale Road NW

---

**By Akoya**