

PARKLIFE

PUTNEY

116 PUTNEY BRIDGE ROAD
LONDON SW15 2NQ

5,031 SQ. FT REMAINING

By Akoya





P Permit holders or Pay at black machine → Display ticket Max stay 4 hours Mon - Sat 8.30 am - 6.30 pm

20

PARKLIFE

PIZZA

W

BUS STOP
Dendlar Road
Towards Bann
or Waterworks
220 270 485
Mon - Sat
8.30 am - 6.30 pm

CONTRIBUTOR ZONE

LET



PARK



LIFE



Reception

PARKLIFE

PUTNEY

ACHIEVE THE PERFECT WORK-LIFE BALANCE

Parklife is the latest building by Akoya, set in the riverside neighbourhood of Putney in South West London. A lush and green development, Parklife epitomises Akoya's work-life balance ethos, creating creative communities in neighbourhoods across the capital.



Breakout space

68,625 sq. ft of modern business space punctuated by tranquil pockets of calm. Views from every floor overlooking Wandsworth Park and the River Thames beyond, combined with a communal roof terrace and oasis courtyard help occupiers to balance work life and wellness in one of the most attractive London locations.

SPECIFICATION



Communal roof terrace



River and park views



On site restaurant and bar



On site co-working space



20 parking spaces



106 cycle parking



24 showers



68 lockers



Landscaped courtyard



Landlord fibre provision – no wayleaves & instant connection

ESG CREDENTIALS

BREEAM®
EXCELLENT



Wiredscore Gold



Airtated Silver



On track for net zero 2030



EPC A

Office floor







Office floor

ACCOMMODATION

FLOOR	SQ. FT (NIA)	SQ. M
STUDIO SPACE	1,970	180
GROUND (Restaurant)	3,168	294
GROUND (Office)	10,677	992
FIRST PART	15,761	1,464
SECOND	16,765	1,557
THIRD	16,231	1,508
FOURTH (Office)	4,510	419
FOURTH (Rooftop cafe/bar)	1,513	140
TOTAL	68,625	6,374

BASEMENT
1,970 SQ. FT

- Building management centre
- Changing rooms
- Car park
- Studio space
- Core



GROUND *Let / Under Offer*
10,677 SQ. FT

- Courtyard/Reception
- Office/Co-working 1,255/2,901 SQ FT
- Office 5,273 SQ. FT *Under Offer*
- Restaurant
- Core



COURTYARD LANDSCAPING

At the heart of the building is a landscaped area offering a place to enjoy a coffee, chat to colleagues or simply relax amongst the greenery.



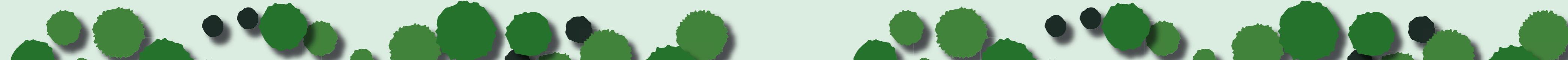
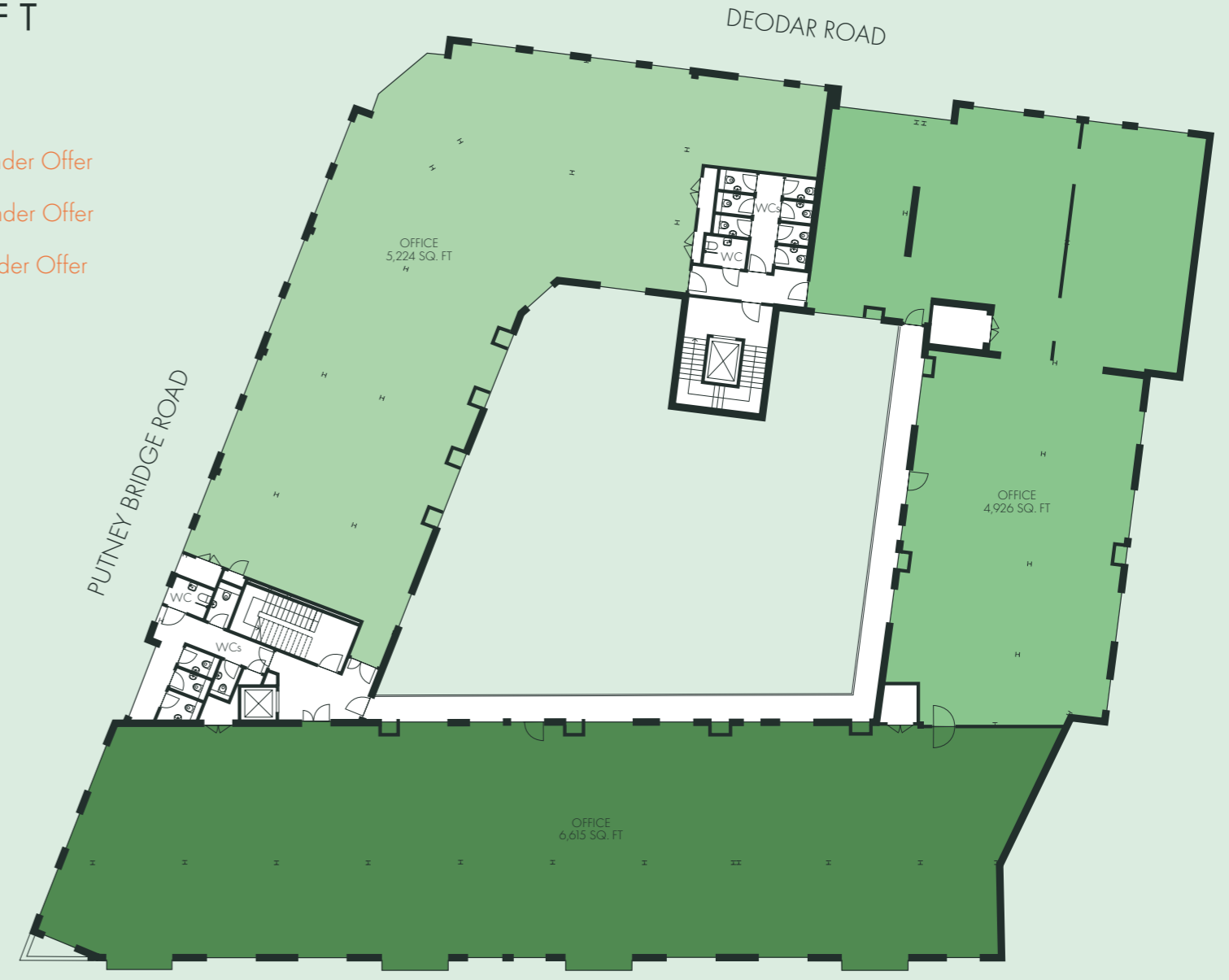
FIRST Last Space Available
15,761 SQ. FT

- Office 5,031 SQ. FT Available
- Office 4,113 SQ. FT Under Offer
- Office 6,617 SQ. FT Under Offer
- Co-working
- Core



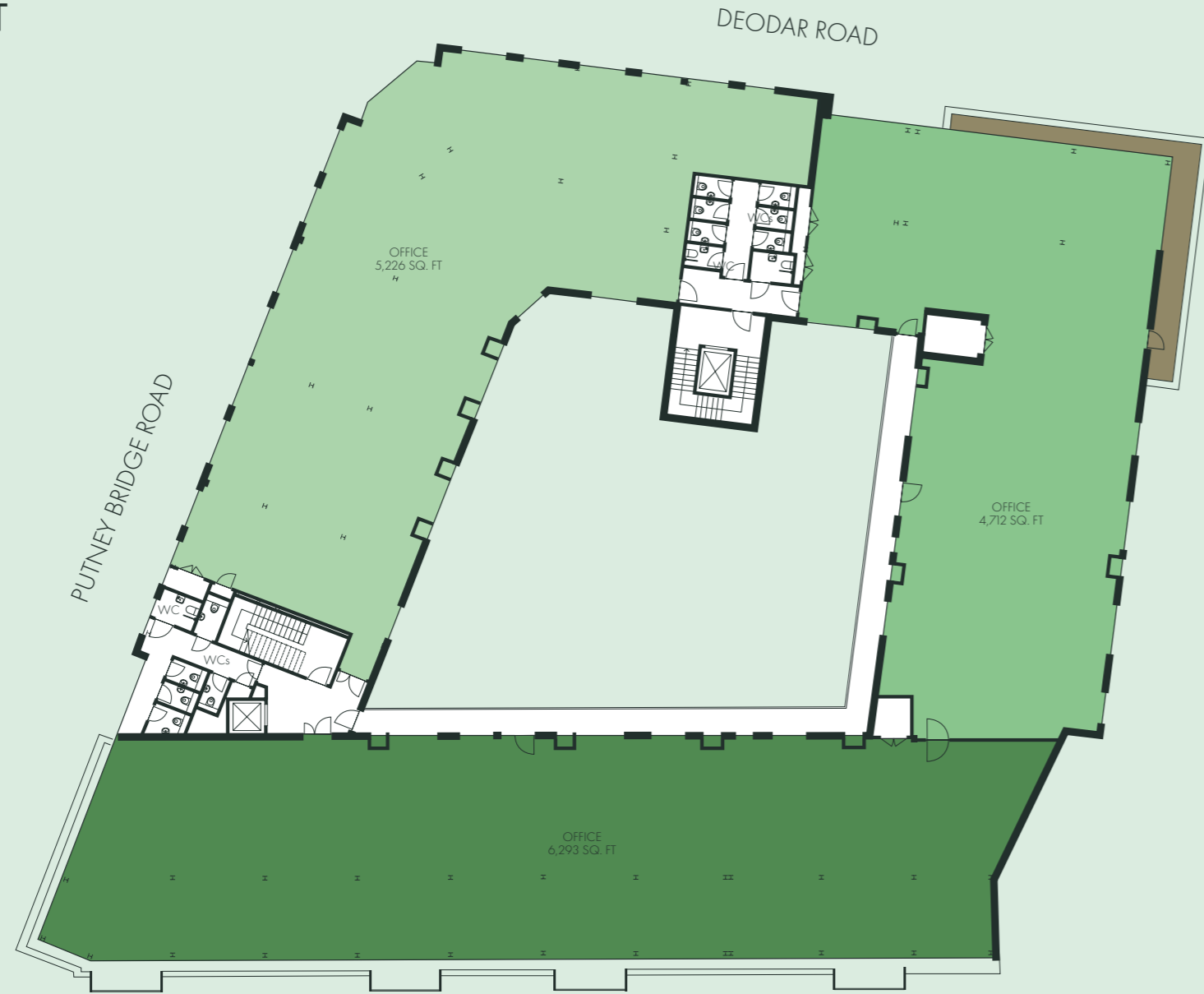
SECOND Under Offer
16,765 SQ. FT

- Office 5,224 SQ. FT Under Offer
- Office 4,926 SQ. FT Under Offer
- Office 6,615 SQ. FT Under Offer
- Core



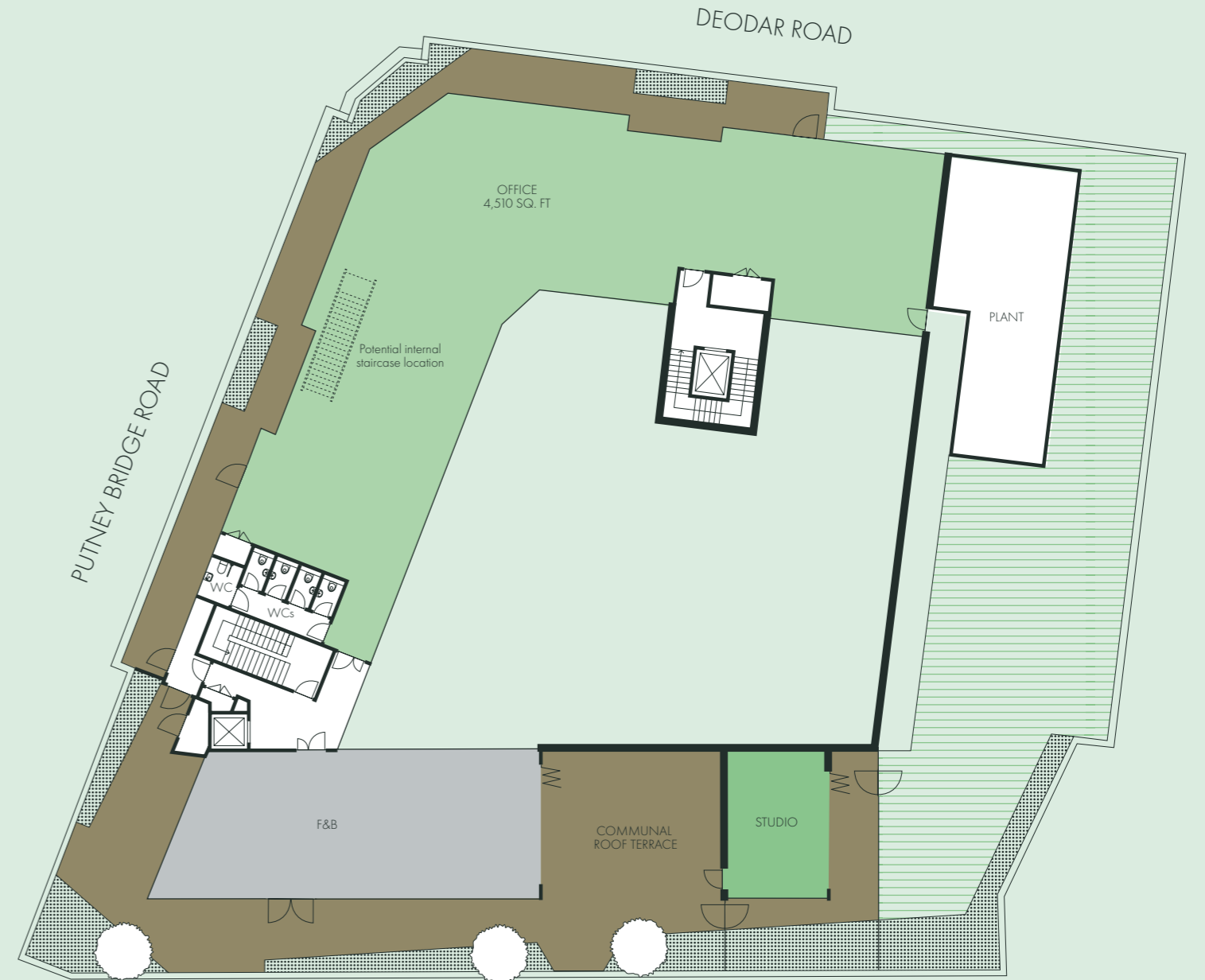
THIRD Let
16,231 SQ. FT

- Office 5,226 SQ. FT **Let**
- Office 4,712 SQ. FT **Let**
- Office 6,293 SQ. FT **Let**
- Terrace
- Core



FOURTH Let
4,510 SQ. FT

- Office 4,510 SQ. FT **Let**
- Studio space **Let**
- Roof terrace
- F&B
- Core
- Roof



22

23



TRAVEL TIMES

	10 MIN East Putney 	10 MIN Putney Bridge 	10 MIN Putney 	21 MIN Wandsworth Town 
	4 MIN East Putney 	4 MIN Putney Bridge 	4 MIN Putney 	6 MIN Wandsworth Town 
	13 MIN Earl's Court From East Putney via District Line	20 MIN Paddington From East Putney via District Line	26 MIN Green Park From East Putney via District & Victoria Lines	32 MIN City From East Putney via District Line





LOCAL



LIFE



LOCAL OCCUPIERS

Food and drink

1. Another Brother Cafe
2. Coppa Club
3. Dynamo
4. The Boathouse, Putney
5. Franco Manca
6. The Prince of Wales
7. Gail's
8. Duke's Head

Amenities

1. CrossFit Putney
2. Physical Culture
3. MeTime Fitness Club
4. Boots
5. Waitrose Local
6. Putney Exchange shopping Centre
7. Fix This Bike
8. Rasons Supermarket

Leisure

1. Putt in the Park
2. All Star Tennis
3. The Putney Arches
4. ODEON Luxe Putney
5. Guillochon Gallery
6. Putney Arts Theatre
7. Ritz Rehearsal Studios
8. Wandsworth Riverside Quarter Pier

On-site restaurant & roof terrace





RIVER



LIFE

AKOYA'S COMMITMENT TO ESG



- Parklife forms part of the Akoya portfolio. We place ESG at the centre of design, our WellWorking approach ensuring that our focus on the environment has a positive impact on people and places.
- Defining principles have guided the design and shape the future management and running of the building. The occupier experience - both as individuals and as a business - is paramount.
- This is a workspace that welcomes everyone, integrating nature into the building, promoting wellbeing and sustainability for the benefit of our occupiers and the wider community. Designing, delivering and managing a building that thrives now, but also for future generations.



FOR FURTHER INFORMATION PLEASE
CONTACT OUR AGENT:



Stuart Austin

Stuart.Austin@eu.jll.com

07912 299 725

PARKLIFE

PUTNEY

Akoyalondon.com/ParklifePutney

By Akoya

Misrepresentation act 1967: JLL for themselves and for the lessor(s) of this property whose agents they are, give notice that: 1. These particulars do not constitute any part of an offer or contract. 2. None of the statements contained in these particulars are to be relied on as statements or representations of fact. 3. Any intending lessee must satisfy himself by inspection or otherwise as the correctness of each of the statements contained in these particulars. 4. The lessor(s) do not make or give and JLL, nor any person in their employment has any authority to make or give, any representation or warranty whatever in relation to this property. Finance Act 1989: Unless otherwise stated all prices and rents are quoted exclusive of VAT Property Misdescription Act 1991: These details are believed to be correct at the time of compilation but may be subject to subsequent amendment. Brochure and photographs. March 2024.