

70 LONDON ROAD

# REGAL HOUSE

TWICKENHAM

TW1 3QS

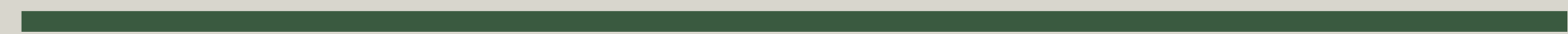


**REFRESH**

**RECYCLE**

**REDISCOVER**

**RECONNECT**



**REGAL**



# REGAL HOUSE

Akoya managed by Feldberg Capital have undertaken a comprehensive refurbishment of Twickenham's landmark office building, Regal House.

Located next to Twickenham station, Regal House has over 30,000 sq ft of sustainably refurbished fitted and part fitted space available to let.

The building is situated across the road from the famous Cabbage Patch Pub and directly adjoined to the newly opened Travelodge. With 24 hours access to Anytime Fitness gym on the first floor and café in reception, the building benefits from a full array of amenities.



[Take a tour](#)

By Akoya

FELDBERG  
CAPITAL

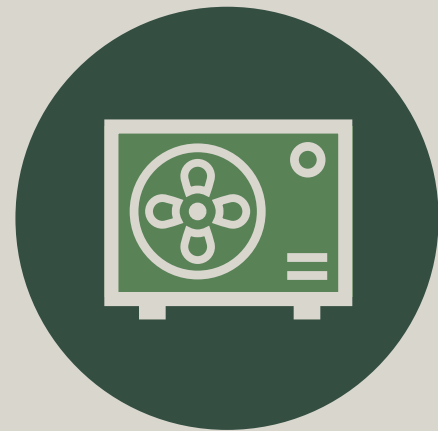




# Refresh



# Specification



New HVAC system



Plug & Play space available



Concierge reception



Sustainable refurbishment of WCs



DDA



Low embodied carbon upgrade of common parts



Secure cycle provision and showers



Onsite Cafe



External seating



Secure onsite parking



Targeting EPC: B



Targeting Airscore 'Gold'



Targeting SKA rating 'Gold'



CAT B fitted space



Reception and Cafe



CAT B fitted space





CAT B fitted space

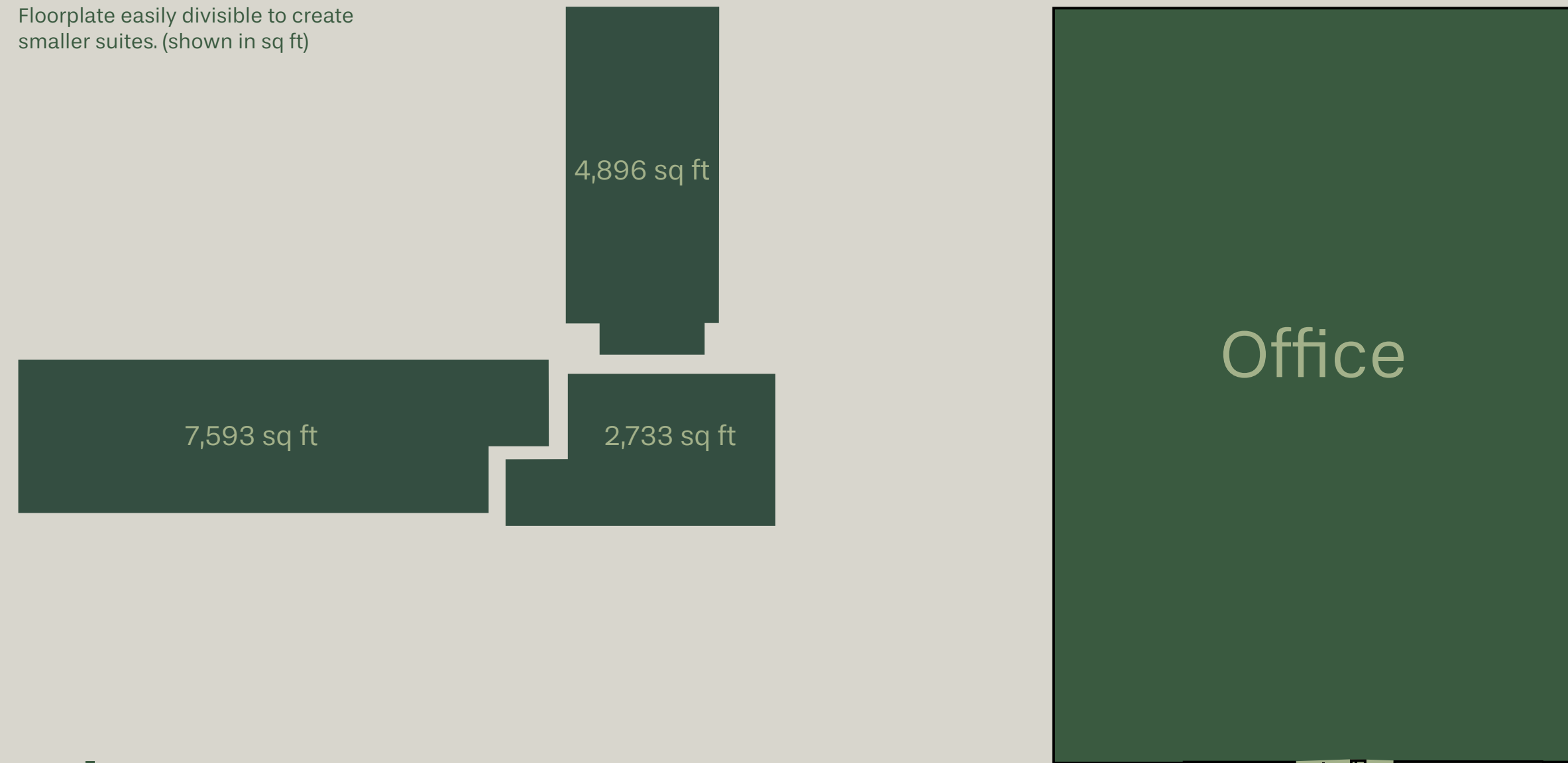


# Availability

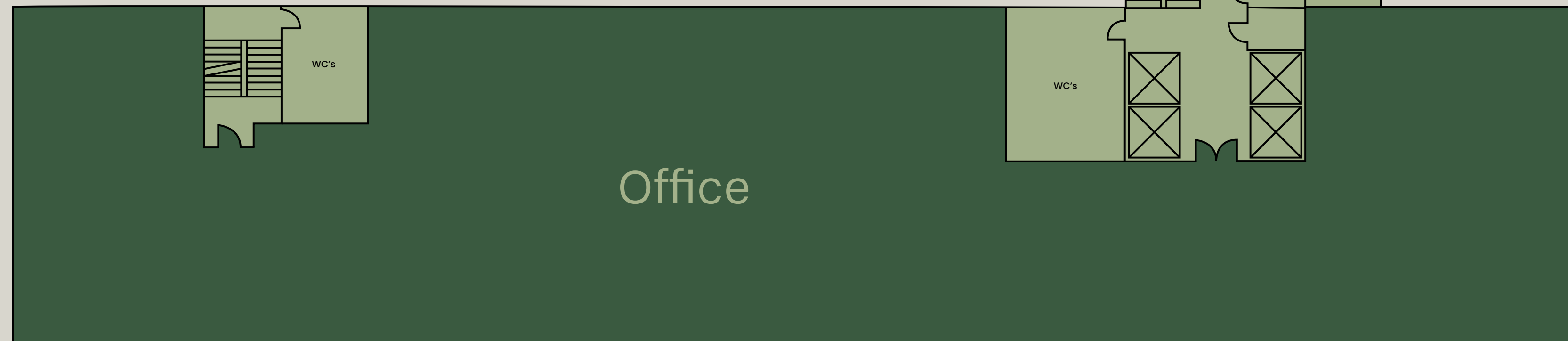
Approx. net internal areas

| Floor | sq ft        | sq m      |
|-------|--------------|-----------|
| 9th   | 1,209        | 112       |
| 8th   | 6,062        | 563       |
| 7th   | 4,985        | 463       |
| 6th   | 2,733–15,222 | 254–1,414 |
| 3rd   | 2,163        | 201       |
| 1st   | 1,744        | 162       |

Floorplate easily divisible to create smaller suites. (shown in sq ft)

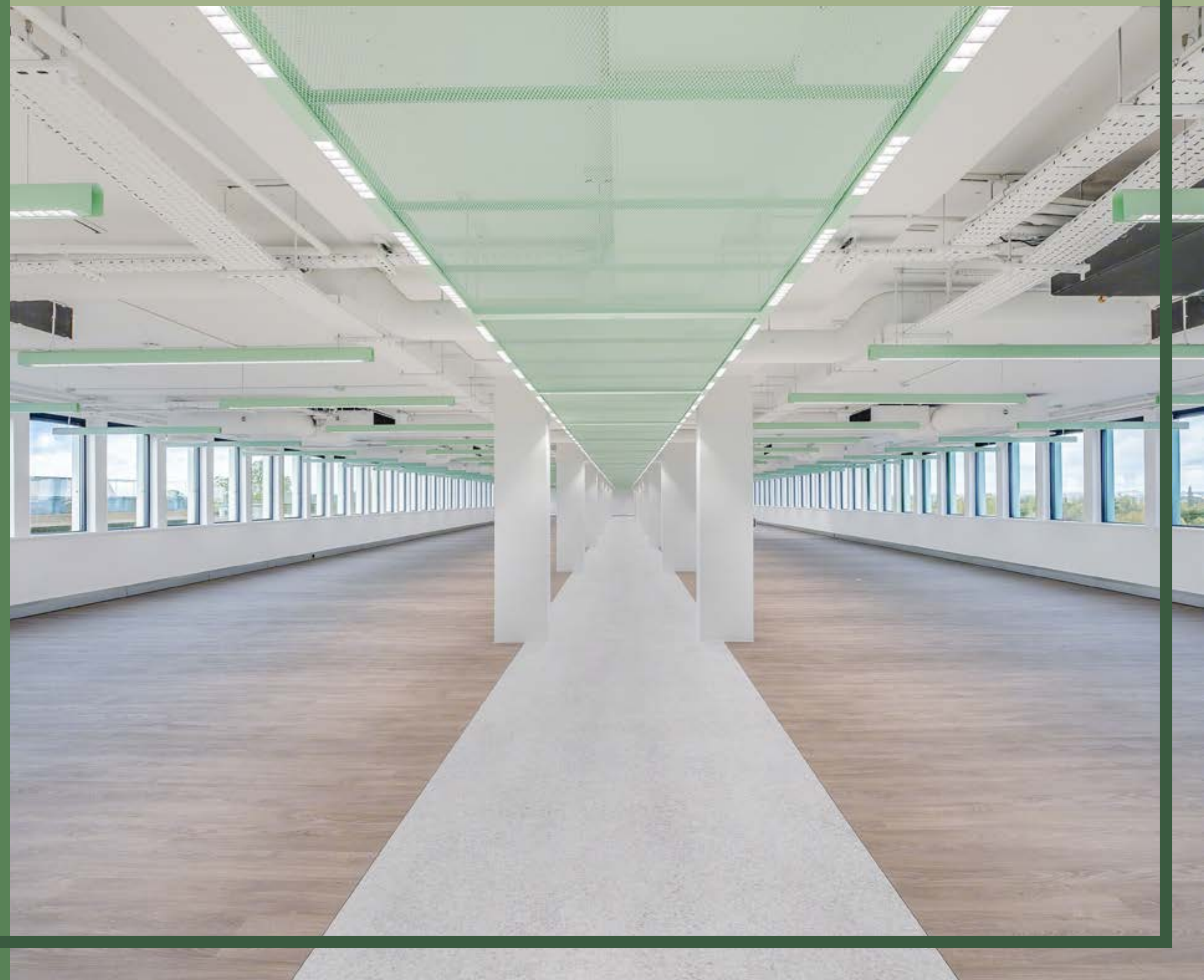


## Typical floor plate





# Recycle





# ESG, sustainability and well working

The Akoya approach is to challenge the norm in the construction and property industry by investing, building and managing assets, guided by the UN Sustainable Development Goals.

Here are just some of the examples where we have made more sustainable choices:



### Connectivity and Technology

Best-in-class connectivity through digital as well as community platforms. Reliable internet speeds.



### Natural Capital

Creating spaces that foster biodiversity, protecting water, air, earth and all living things.



### Local Community

Playing our part in the community, promoting social betterment, diversity and inclusion.



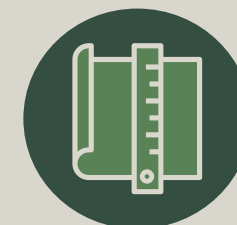
### Climate & Environment

Aiming to deliver a net zero portfolio.



### Wellbeing

Projects where air quality, temperature control, exercise amenities and natural light allow tenants to thrive.



### Design

Breathing new life into existing buildings, by repurposing and reimagining.



Chair base and back made from recycled coffee and table top made from recycled suits



Worktop made from recycled yoghurt pots

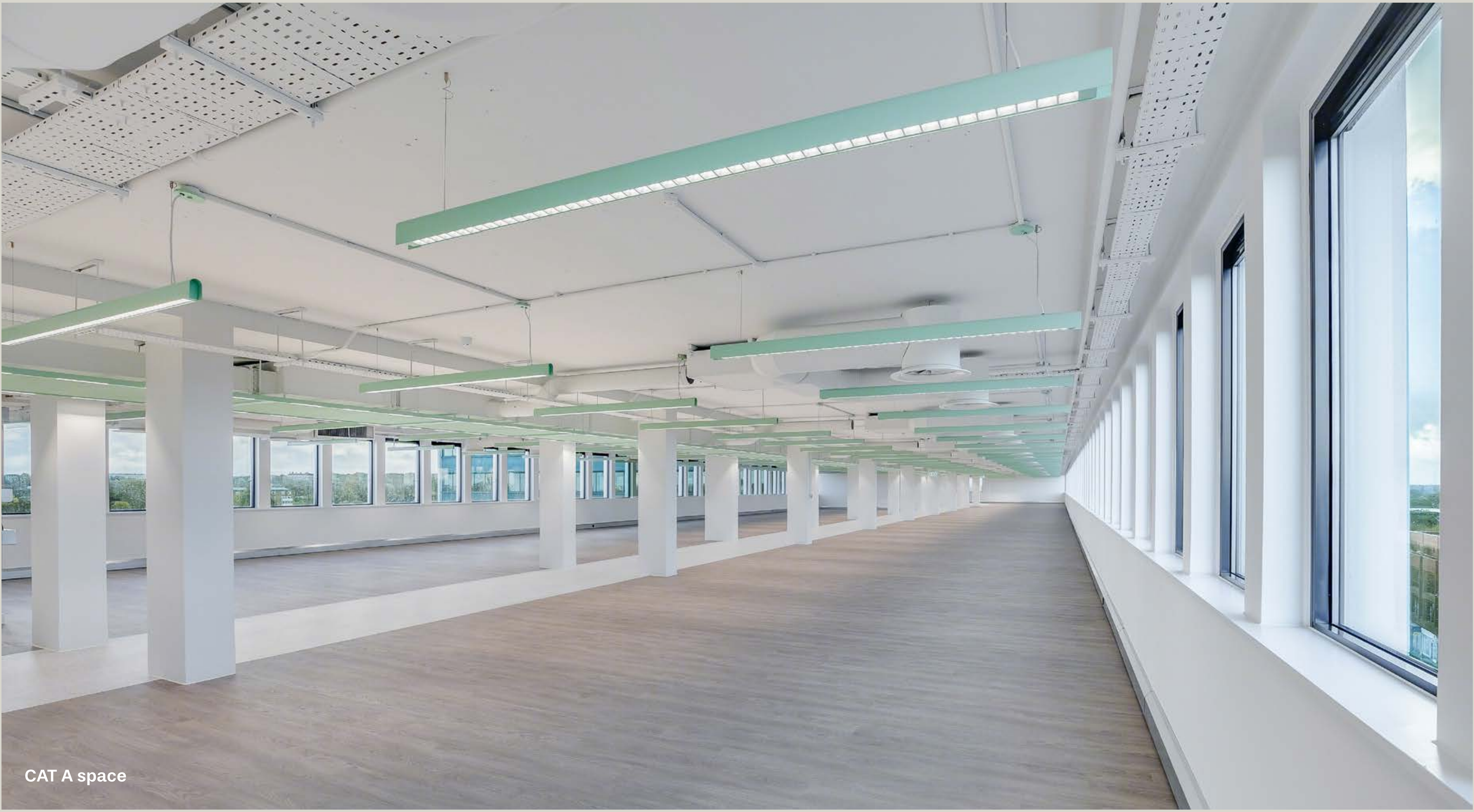


Reused rafts from One New Change where landlord was sending to landfill



The refurbishment of Regal House has achieved a SKA rating of Gold. This means that sustainability has been considered in every choice throughout the project.





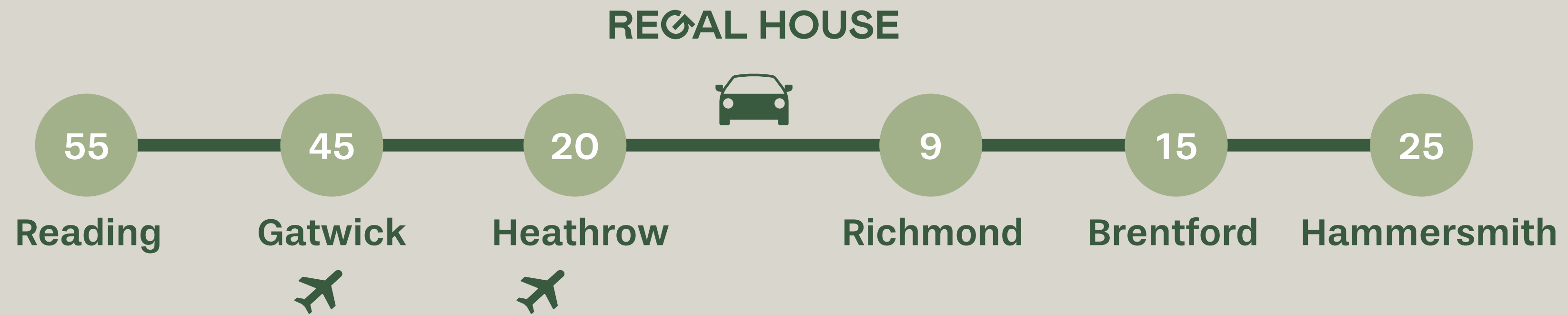
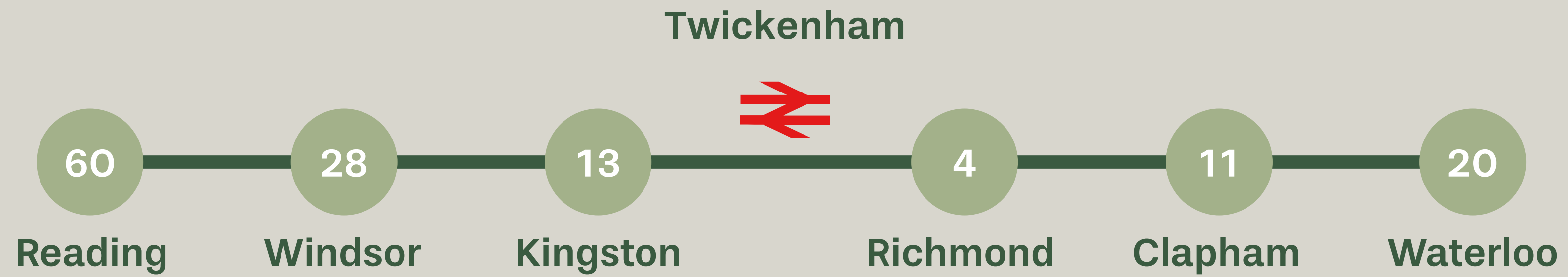
CAT A space



# Reconnect

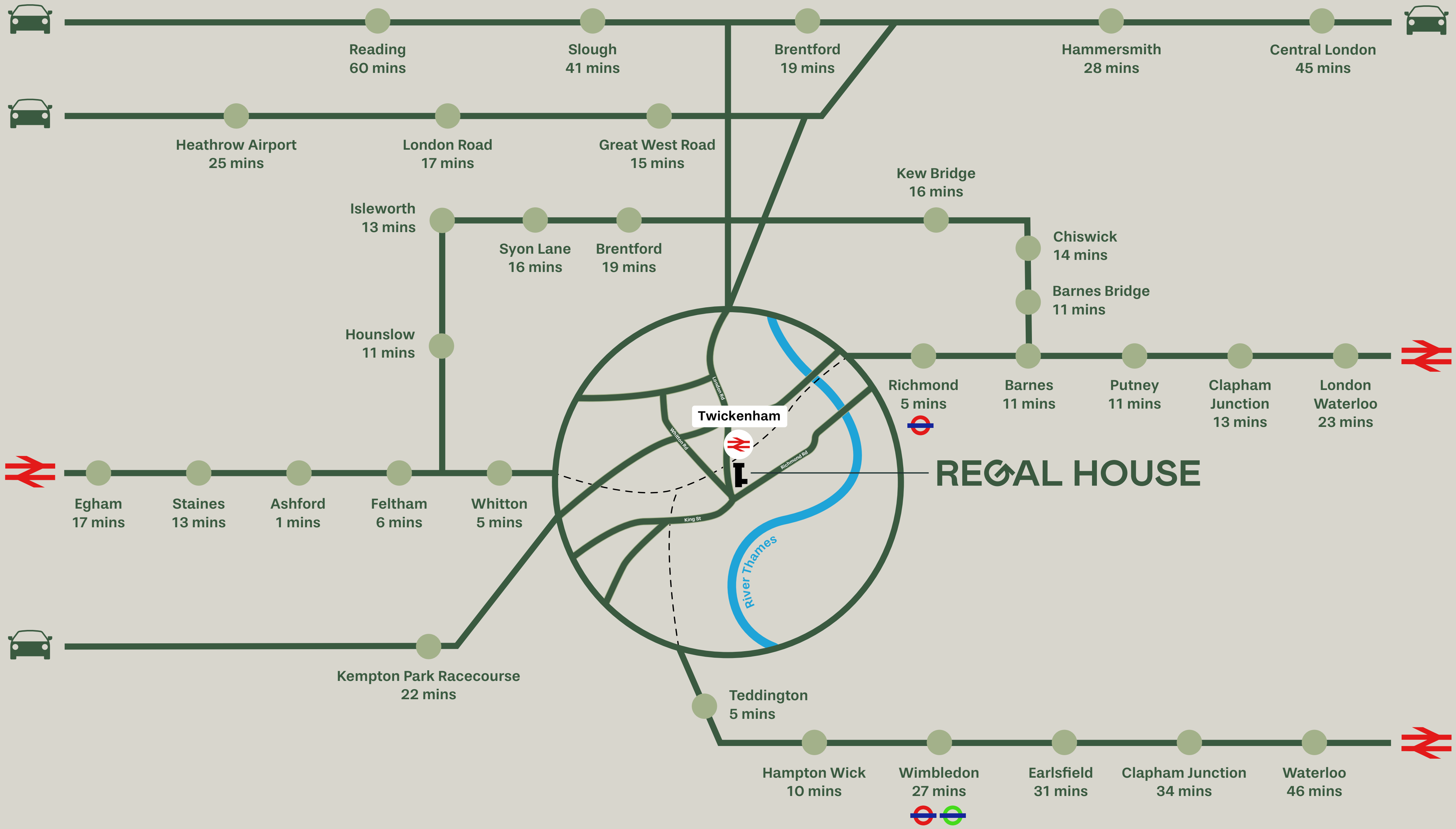


# Destinations in minutes





# CONNECTIONS



Twickenham

REGAL HOUSE

River Thames

# Rediscover







## Food & Drink

1. The Shack 68
2. Harris + Hoole
3. Esquires Coffee
4. Barmy Arms
5. The Fox
6. The Press Room
7. The Crane Tap
8. Water Lane Coffee
9. George
10. KOKORO
11. Starbucks
12. GAIL's
13. Waitrose
14. The Cabbage Patch

## Fitness

15. PureGYM
16. Anytime Fitness
17. Blitz CrossFit
18. Joe's Reformer Pilates
19. The Yoga Bar
20. Move Physio
21. The Shredquarters

## Hotel

22. Travelodge

# For more information please contact one of our agents:



**David Cuthbert**

dcuthbert@hanovergreen.co.uk

020 3130 6401

07710 183 423

**Harry Pruden**

hpruden@hanovergreen.co.uk

020 3130 6416

07721 128 796

---

[www.hanovergreen.co.uk](http://www.hanovergreen.co.uk)

[akoyalondon.com/regalhouse](http://akoyalondon.com/regalhouse)



**Andrew Armiger**

andy@cattaneo-commercial.co.uk

020 8481 4741

07973 207 424

**Tim Wilkinson**

tim@cattaneo-commercial.co.uk

0208 481 4745

07973 302 814

---

[www.cattaneo-commercial.co.uk](http://www.cattaneo-commercial.co.uk)

# REGAL HOUSE

## By Akoya

---

Developed and  
managed by



Misrepresentation act 1967 and declaration: Hanover Green and Cattaneo-Commercial for themselves and for the vendor as agents for the vendor give notice that:

1. We provide the information contained in these particulars for guidance to intending purchasers, licensees or any other third parties and they are for your general information only and will be used at your own risk. 2. We will use all reasonable endeavours to ensure the accuracy of information, however, we do not guarantee or warrant the accuracy or completeness, factual correctness or reliability of any information in the particulars (especially as the information may have been obtained from third parties) and do not accept any liability for any errors or omission including any inaccuracies or typographical errors. 3. Any interested purchasers, licensees or any other third parties should not view the information in the particulars as statements or representations of fact and should satisfy themselves that the facts and the specific details in the particulars are correct and accurate especially in relation to floor area and other measurements through inspection or other means, as appropriate, and will be responsible for taking independent surveys or valuations before entering into any legally binding transaction in respect of the property or premises that is the subject matter of these particulars. 4. We have not made any investigations or otherwise of any issues concerning pollution and potential land, building, air or water contamination. Prospective purchasers, licensees or any other third parties must undertake their own enquiries and satisfy themselves in this respect. 5. Unless otherwise stated, all prices and rents are quoted exclusive of VAT. November 2023 Designed by Smart Soho